



W2W CANVAS BAG ORGANISER
C422-EM-1004R0-C04



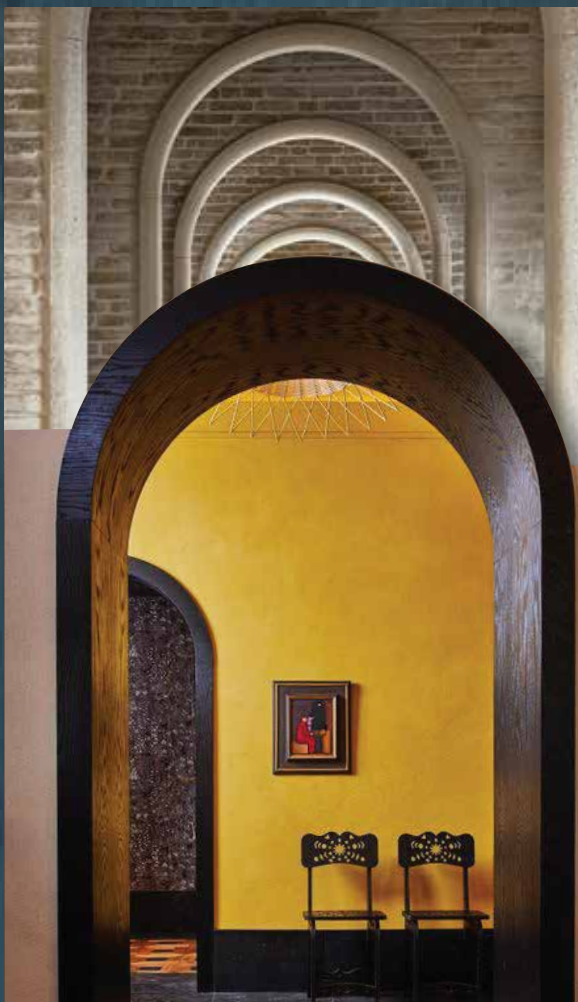
SET OF 2 W2W TIE HANDLE POUCHES
C422-EM-1002R0-C04

GREAT FOR STORAGE



CAN BE FOLDED FLAT

W2W MAKEUP POUCH
C422-EM-1004R0-C04



W2W MESH BEACH TOTE
C422-EM-1005R0-C04

Waste 2 wear bags & pouches



W2W CANVAS TOTE WITH WEBBING HANDLES
C422-EM-1003R0-C04

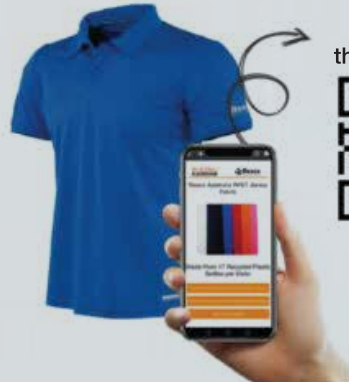


Made and Certified by:
Waste2Wear®
RA-3
Recycling Assurance 3



Waste2Wear® produce recycled yarns, fabrics & finished goods made from land & ocean plastics. Offering a wide range of weights and qualities. They offer transparent supply chain using blockchain which connects the physical supply chain with secure digital tracing. They provide a QR code which takes you to a landing page with information on the supply chain, including number of bottles used per product. This QR code can be printed on the end product for final consumers to use.

Example what QR code shows without extended blockchain



Scan to see the blockchain



Example what QR code shows with extended blockchain



Scan to see the blockchain



SUSTAINABLE

bags & pouches

🌐 <http://www.concept4.net>

📷 [concept4group](#)

✉ hello@concept4.net



GRS PLEATED VELVET COSMETIC BAG
C422-EM-1011R0-C04



GRS WAFFLE COSMETIC BAG
C422-ZP-1008R0-C04



**WASTE 2 WEAR MARKET TOTE
WITH VEGAN PU HANDLES**
C422-EM-0911R0-C04



**RECYCLED SATIN COSMETIC POUCH
WITH WATERBORNE PU TRIM**
C422-SS-1010R0-C04



GRS QUILTED TERRY COSMETIC BAG
C422-ZP-1012R0-C04



**GRS VELVET ROUND POUCH WITH
TASSEL DETAIL**
C422-EM-0913R0-C04



**PUFFY RECYCLED NYLON COSMETIC
BAG**
C422-EM-1013R0-C04



Global Recycled Standard (GRS) is an international, voluntary, full product standard that sets requirements for third-party certification of recycled content, chain of custody, social and environmental practices, and chemical restrictions.

Bags and pouches are within our GRS scope, which means that GRS certified raw materials will be used to make these products in factories that meet GRS standards, which are sold by Concept4.

Our customers can now use GRS logos on marketing, labelling & packaging for these categories.

***The recycled content of the whole product must be more than 50%**



1



**1. PAPER STRAW & CORK
PACKAGING POUCH**
C422-HY-1009R0-C04

2



**2. GRS CRUSHED VELVET
COSMETIC BAG**
C422-HY-1007R0-C04

3



**3. PAPER STRAW & RECYCLED CANVAS
ENVELOPE COSMETIC POUCH**
C422-HY-1009R0-C04

SUSTAINABLE

bags & pouches



**CONTRAST COLOUR
FRONT & BACK**

4

PACKABLE DRAWSTRING SHOPPER
C422-SQ-0864R0-C04

5



GRS TEDDY FUR HOB0 BAG
C422-EM-0967R0-C04

6



GRS TEDDY FUR TOTE
C422-EM-0968R0-C04

7



**W2W CANVAS TOTE WITH STRIPE
PRINT**
C422-EM-0865R0-C04



FASHION
NYLON BAGS

///2021



Backpack
C420-SR-0734R0-FFF



Backpack
C420-SR-0733R0-FFF



Backpack
C420-SR-0732R0-FFF



Tote bag
C420-SR-0034R1



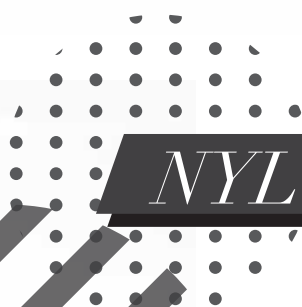
Backpack
C420-SR-0061R1



Tote bag
C420-SR-0730R0-FFF



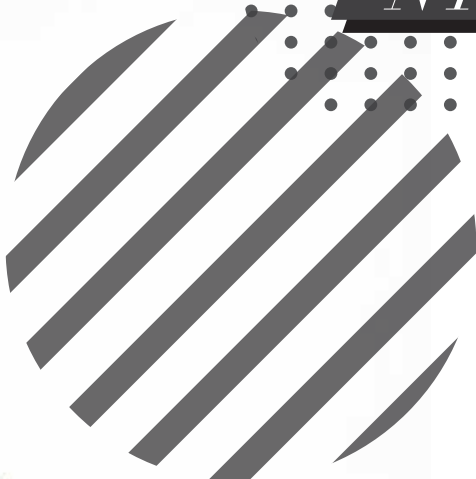
Tote bag
C420-SR-0731R0-FFF



NYLON TECH BAGS



Crossbody/bum bag
C420-SR-0073R1



Tech bag
C420-PS-001



Tech bag
C420-SR-0746R0-ORI



Tech bag
C420-SR-0747R0-ORI



Drawstring tote bag
C420-SR-0693R1



Crossbody bag
C420-SR-0930R1



Weekender
C420-SR-00389R1



Tote bag
C420-SR-0378R1



Foldable



Bum bag - C420-SR-0105R1



Foldable



Drawstring backpack - C420-SR-0345R0-CO4



 CONCEPT4



1/ C4-SS22-WE-001



2/ C4-SS22-WE-002



3/ C4-SS22-WE-003



4/ C4-SS22-WE-004

Look good, feel Better

with our sustainable bag & pouch refresh.

Our new totes and pouches are made from recycled cotton / BCI or organic cotton / waterborne PU / natural straw / jute / RPET linings and RPET zip tape.

[See more >](#)



5/ C4-SS22-WE-005



6/ C4-SS22-WE-006



7/ C4-SS22-WE-007



4/ C421-SR-0167RO-SSL, 5/ C421-SR-0225R2-SSL



8/ C421-SR-0172R2-SSL, 9/ C421-SR-0222RO-SSL



12/ C421-SR-0166RO-SSL



All of our bag recycled qualities can be made from GRS materials.

Concept 4 now has bags and pouches within our GRS scope which means GRS certified recycled raw materials can be used to make these bags and pouches, in factories that meet GRS standards which are sold by Concept 4.

Our customers can now use GRS logos on marketing, labelling & packaging for products using these recycled materials.



<http://www.concept4.net>



hello@concept4.net



[concept4group](https://www.instagram.com/concept4group)

Wheat straw & recycled PP

We can offer claw clips made from a mixture of wheat straw and recycled PP. The wheat straw part of the clip is made up of natural by-products and is biodegradable. Mixing it together with recycled PP creates a much more sustainable alternative to using virgin plastic.



Hair claw in wheat straw with recycled PP



Sustainable
Hair Accessories



Hair scrunchie in GRS – 65% recycled poly, 35% cotton



Hair elastics (10pcs set) in 50% recycled spandex 50% nylon

GRS

We can offer scrunchies, headbands and hairbands made from recycled bottles in cotton feel, jersey or satin!

Our customers can use the GRS logo on marketing, labelling and packaging for these product categories.

GRS is an international, voluntary, full product standard that sets requirements for third-party certification of recycled content, chain of custody, social and environmental practices and chemical restrictions.

Recycled ABS

The property of being able to reheat ABS over and over again makes it such an awesome candidate for recycling. ABS is not biodegradable, so recycling and reusing it is a good solution.



Hair claws in recycled ABS



Sustainable Hair Accessories

Waste 2 wear®

Waste2wear® produce recycled yarns, fabrics & finished goods made from land & ocean plastics. Offering a wide range of weights and qualities. They offer transparent supply chain using block-chain which connects the physical supply chain with secure digital tracing. They provide a QR code which takes you to a landing page with information on the supply chain, including the number of bottles used per product. This QR code can be printed on the end product for final consumers to use.



Hair scrunchie in waste 2 wear 65% RPET & 35% cotton

Hair clip in 60% Recycled material



Recycled metal

The decoration on our metal clips is available in recycled zinc alloy. Clip bases are not currently available in recycled material.

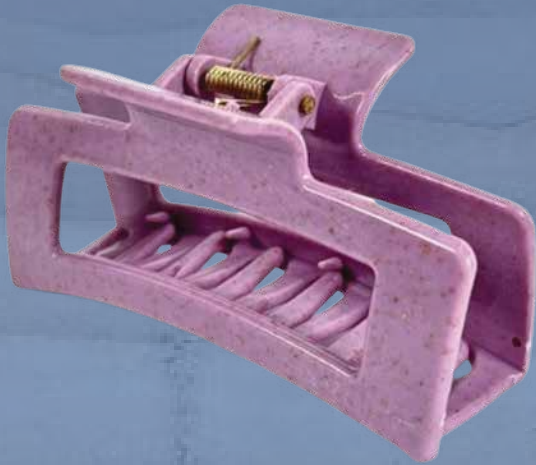
Hair clip in 45% Recycled material



Hair claw in wheat straw with recycled PP



Hair claw in wheat straw with recycled PP



Hair elastic set in 50% recycled spandex 50% nylon



GRS

We can offer scrunchies, headbands and hairbands made from recycled bottles in cotton feel, jersey or satin!

Our customers can use the GRS logo on marketing, labelling and packaging for these product categories.

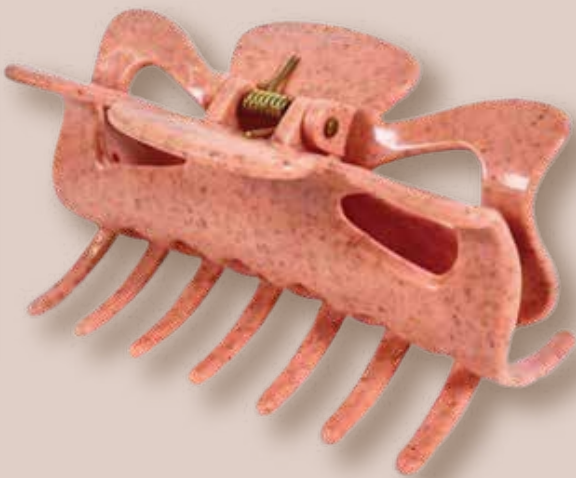
GRS is an international, voluntary, full product standard that sets requirements for third-party certification of recycled content, chain of custody, social and environmental practices and chemical restrictions.



Hair claw in wheat straw with recycled PP

Wheat straw & recycled PP

We can offer claw clips made from a mixture of wheat straw and recycled PP. The wheat straw part of the clip is made up of natural by-products and is biodegradable. Mixing it together with recycled PP creates a much more sustainable alternative to using virgin plastic.



Hair Spiral in 35% Recycled material

****Spiral base is not available in recycled material**



Recycled metal

The decoration on our metal clips is available in recycled zinc alloy. Clip bases are not currently available in recycled material.

Hair elastics (10pcs set) in 50% recycled spandex 50% nylon

GRS

We can offer scrunchies, headbands and hairbands made from recycled bottles in cotton feel, jersey or satin!

Our customers can use the GRS logo on marketing, labelling and packaging for these product categories.

GRS is an international, voluntary, full product standard that sets requirements for third-party certification of recycled content, chain of custody, social and environmental practices and chemical restrictions.



Hair elastics (10pcs set) in 50% recycled spandex 50% nylon



Hair scrunchie in bamboo viscose & polyester

Bamboo

As a raw material, bamboo is a natural and highly sustainable plant. It has a minimal environmental impact compared with many crops. Bamboo is a fast-growing plant that doesn't require the use of pesticides to grow.





GOT's

Third party certification that has set requirements for organic textiles. GOTs provides assurance from the harvesting of the raw materials, environmentally & socially responsible manufacturing, to labelling.

EYE MASK



HAT



TIGHTS



SOCKS



SCARF



MITTENS



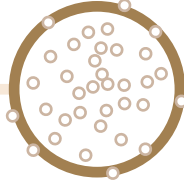
At Concept 4, we also cover other sustainable materials, such as, Bamboo, Non-full chain GRS, Regular recycled- no certifications, Recycled microfiber, if you would like further information, please ask for more details.



Post-consumer plastic bottle



Bottles Shredded melted & reformulated



Chip is extracted & textured through proprietary process



Made in to fibre



Fibre woven into yarn

BROWN-CAMEL-MITTEN
C4-S23-WE-1112



CUSHION
C4-S23-QY-003



KNITTED SCARF
C4-S23-WE-1116



HAT
C4-S23-WE-1114



KNITTED HEADBAND
C4-S23-WE-1115



EYE MASK
C4-S23-WE-1113



SOCKS
C4-S23-WE-1119



WOVEN SCARF
C4-S23-WE-11110



GRS

At C4 we like to collaborate with other companies that share our sustainable vision.

GRS Alignment of recycled definitions across multiple applications, which helps to Verify recycled content in products, which helps consumers to make informed decisions using GRS as a safety tool.

Concept 4 resonates with GRS because it shares our vision and overall objective to reduce harmful impact of production to people and the environment, GRS also provides assurance that products are processed more sustainably and drives a higher percentage of recycled content in products.

OEKO-TEX

At C4 we like to collaborate with other companies that share our sustainable vision.

OEKO-TEX enables consumers to have peace of mind, knowing that they are making responsible decisions which help to protect our planet for our future generations, the testing and certification process on which our standards are based on, guarantee maximum consumer safety.

KIMONO
C4-S23-AH-001



WOVEN HAT
C4-S23-IC-878



WOVEN BLANKET
C4-S23-WE-001



WOVEN SCARF
C4-S23-WE-999



WOVEN SLEEPWEAR
C4-S23-AH-002



KNITTED SCARF
C4-S23-WE-IC-BL-0013



KNITTED HAT
C4-S23-IC-1144



THROW
C4-S23-NT-00



SLEEPMASK
C4-S23-WE-IC-BL-0012



TABLECLOTH
C4-S23-HMWE-01



TABLE RUNNER
C4-S23-HMWE-02



KNITTED SOCK
C4-S23-WE-BL-0011



KNITTED GLOVES
C4-S23-WE-IC-BL-0014



KNITTED SCARF
C4-S23-IC-001



PLACEMAT

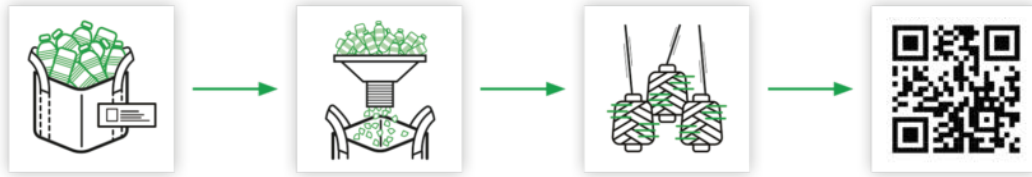


CUSHION



**STANDARD
100**

Waste@Wear

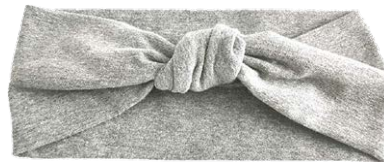


SATIN SLEEP SET

SATIN SCARF



HEADBAND



HEADWRAP



SATIN SCARF



SCRUNCHIE



TOTE BAG



EYEMASK



JERSEY SLIPPERS



POUCH



SATIN KIMONO



Concept 4 offers Waste to wear, we like to collaborate with companies that align with our vision.

Transparency of the supply-chain, using veracity of digital records through physical proofs showing the journey of the recycled materials: from waste to product

They demonstrate accountability through compliance and certifications of each supplier involved in the chain.



Concept 4 works with Waste2Wear® because of the traceability testing they have on their side, which comes with online documents as evidence.

Made and Certified by:



1 Chemical Analysis



2 Microscopic Assessment



3 Document Validation

Recycling Assurance 3-Step Standard (RA3)

The Waste2Wear® Recycling Assurance 3-Step Standard (RA3), assures customers that our fabrics and textile products contain actual recycled plastic content. It also guarantees the number of plastic bottles used in a fabric and the transparency of your business. It can be applied to fibres, yarns fabrics, and final products.

Example what QR code shows without extended blockchain



Example what QR code shows with extended blockchain



Waste to wear offers fabric only option.

They guarantee blockchain from bottle collection to the end of our GRS certified supply chain. If you only need the fabric, you will receive a QR code leading your customers to an image of the fabric waste to wear have produced for you. Which you can use for advertisement on your end product, at the same time if you would like to represent the whole supply chain this can also be added.

Scan the two QR codes to see the difference.



1/ DT-FK10936

2/ DT-SP20237

RPET sunglasses



Spring Summer Sustainable sunglasses

- 1/ Round frame in transparent honey colour with matching colour lens
- 2/ Round frame in milky light pink colour with contrast grey lens
- 3/ Round frame in transparent brown tone and tortoise shell print temples with contrast grey lens
- 4/ Round frame in tortoise shell print with matching colour lens



3/ DT-TP16607P

4/ DT-ZH20003



5/ DT-TP27019Q



6/ DT-FJ2309



7/ DT-SP20260



8/ DT-FJ2309



RPET sunglasses

Spring Summer Sustainable sunglasses



<http://www.concept4.net>



hello@concept4.net



[concept4group](#)

9/ DT-SP19301



10/ DT-SP20260



11/ DT-SP19311



12/ DT-LZS1004



13/ DT-SP20260



12/ Temple details



13/ Gradient-patterned frame



9/ Classic wayfarer in black

10/ D shape frame in grey with gradient blue lens

11/ Wayfarer style with tortoise shell print and matching colour lens

12/ D shape frame in milky pink with frosted finishing and matching colour gradient lens

13/ D shape frame in gradient dark brown to tortoise shell print with gradient brown lens